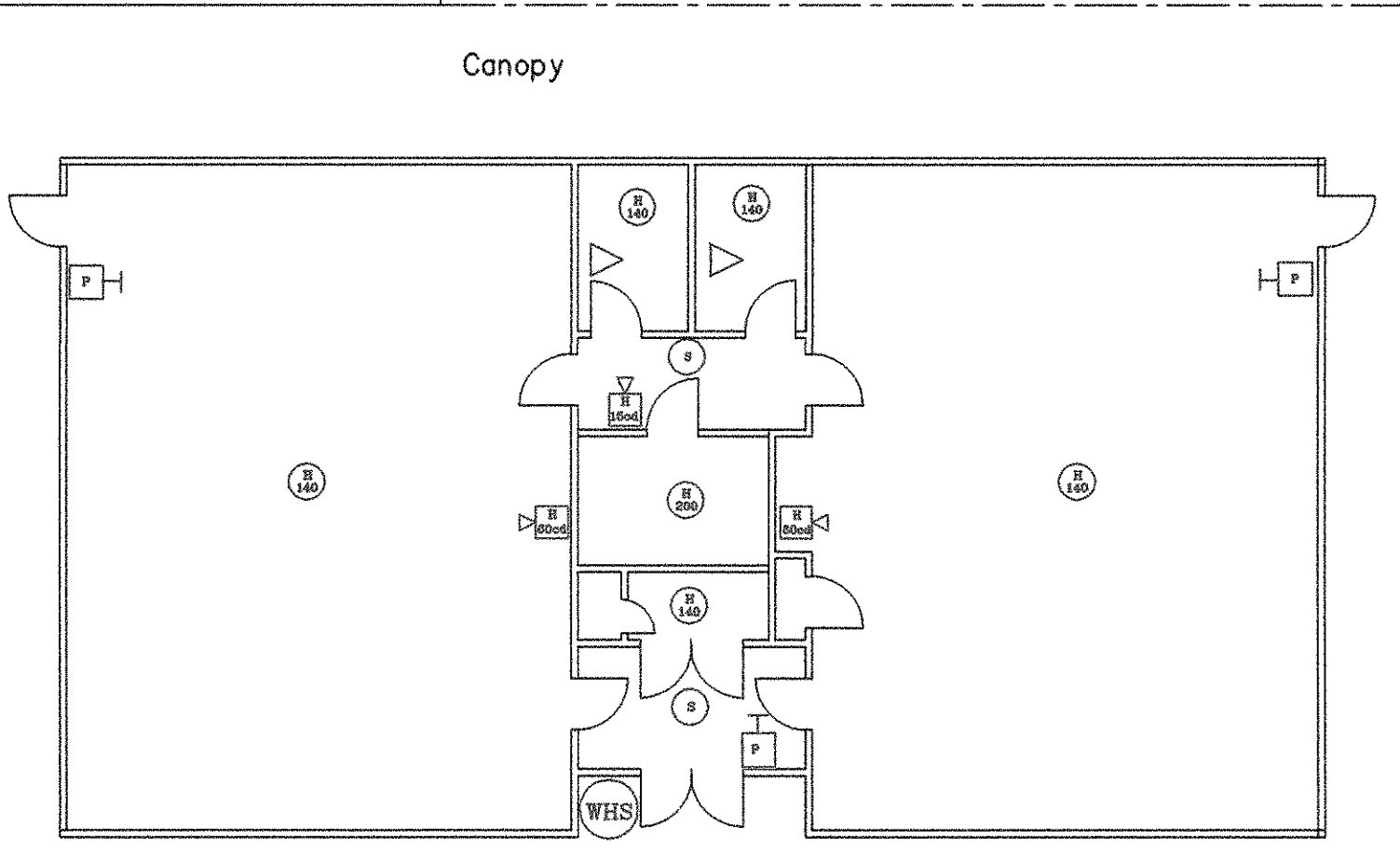
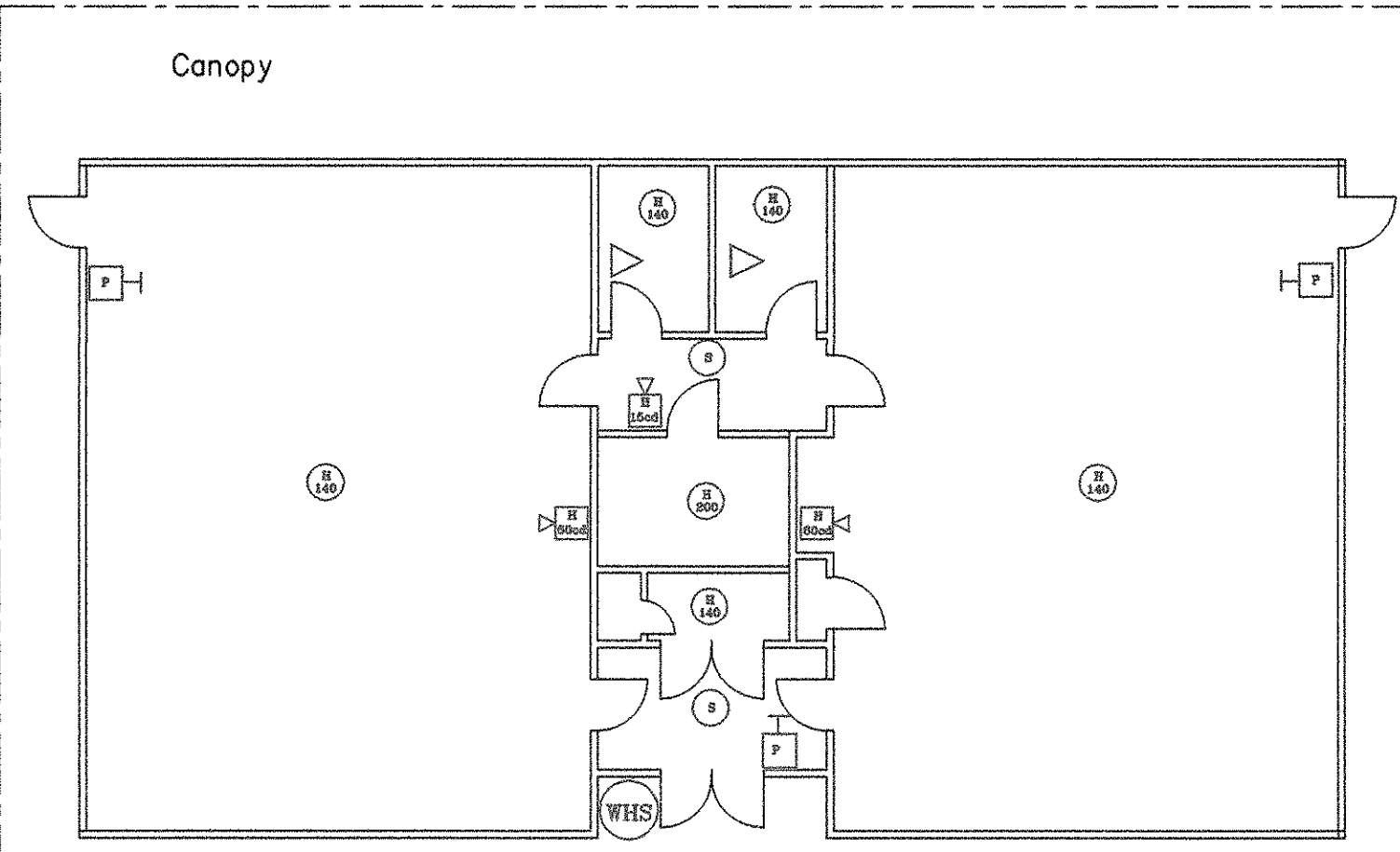


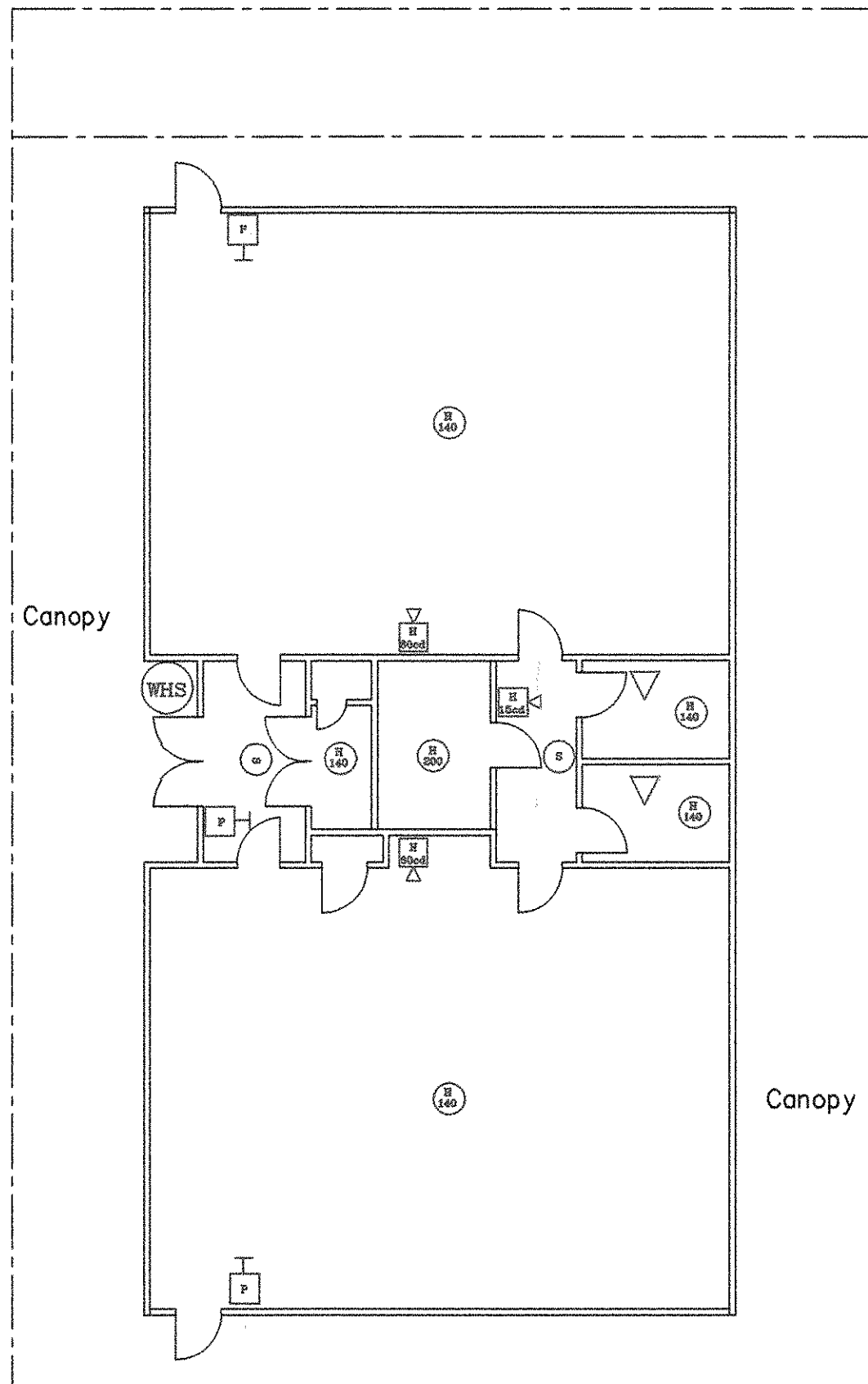
Bldg No 5



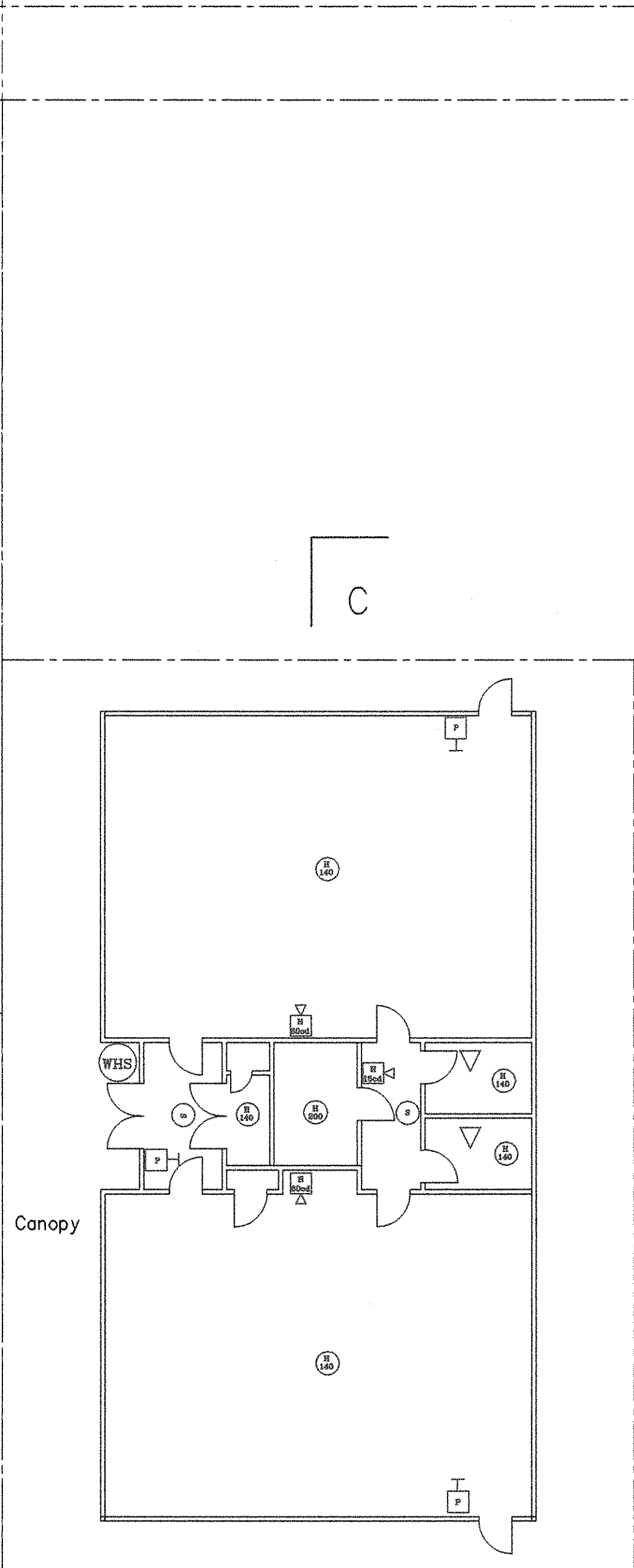
Bldg No 3



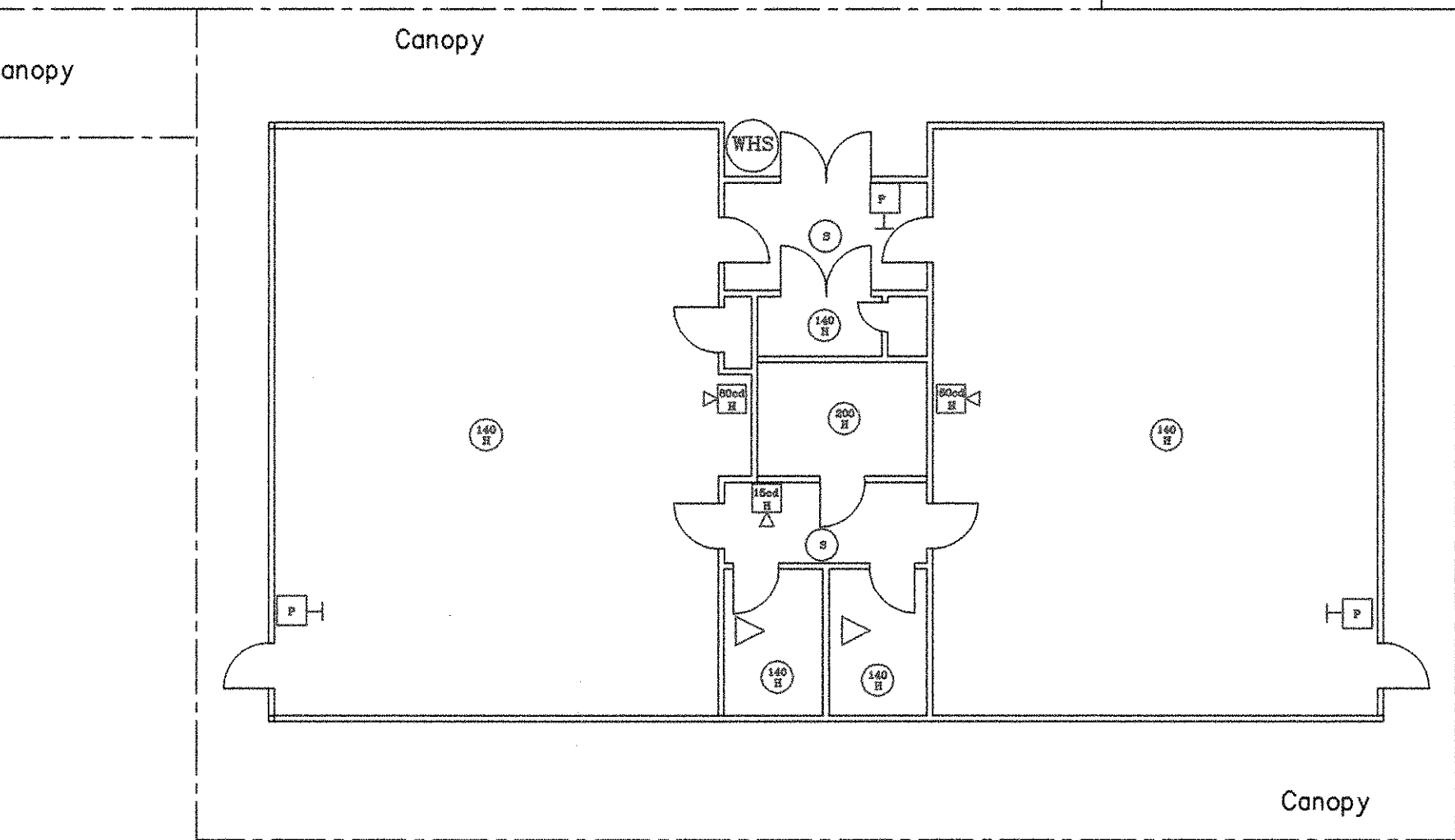
Bldg No 1



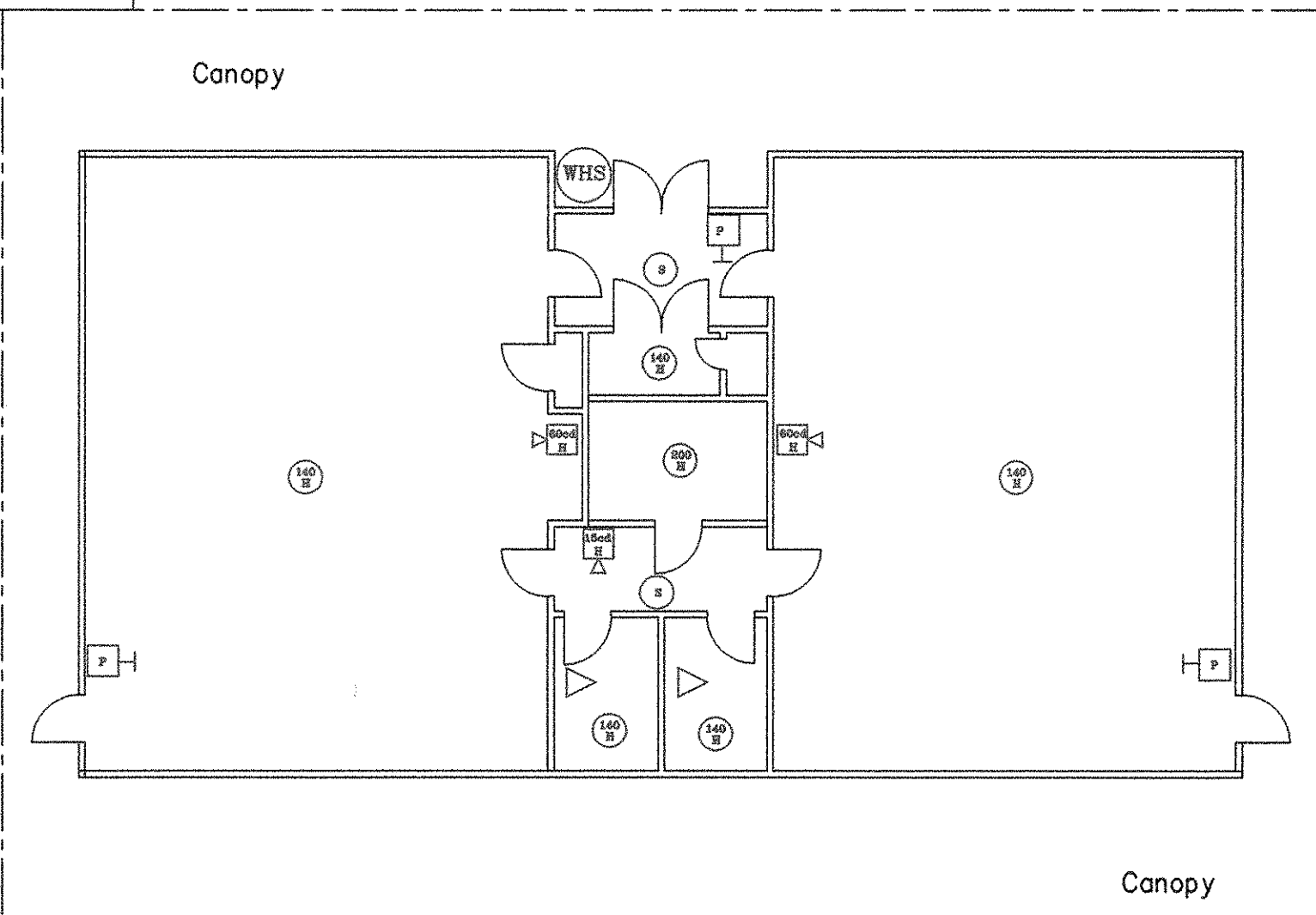
Bldg No 7



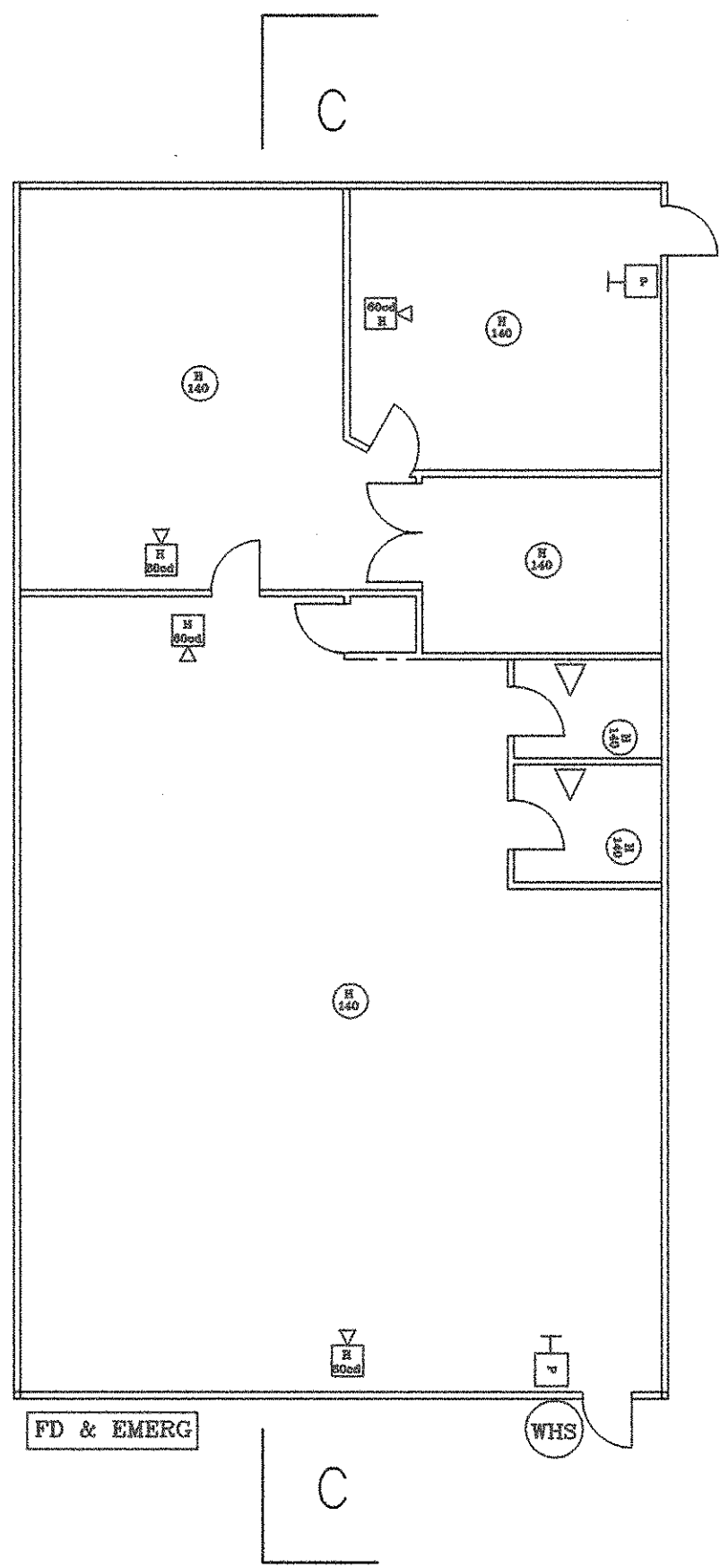
Bldg No 9
First Floor



Bldg No 4

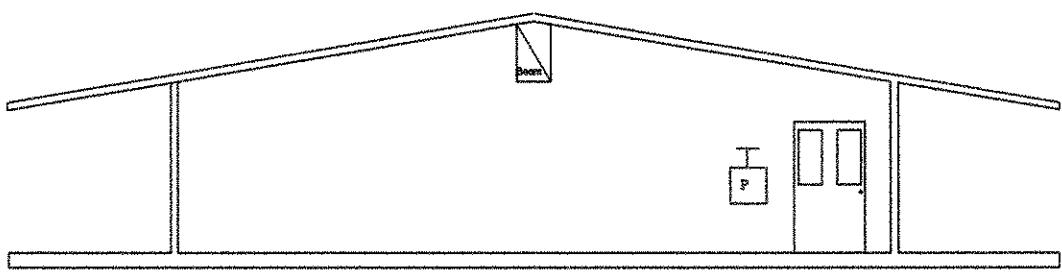


Bldg No 2

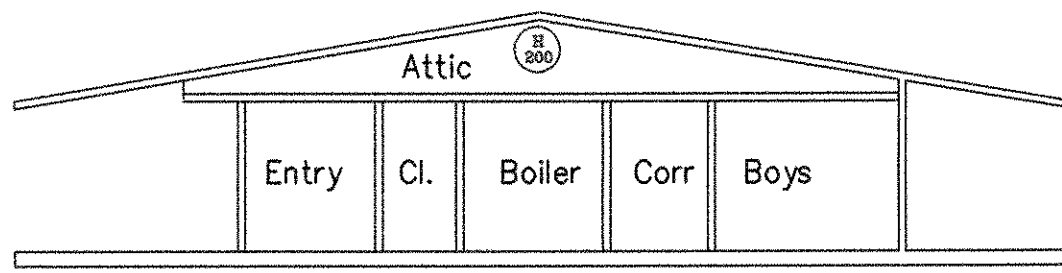


Bldg No 9
Basement

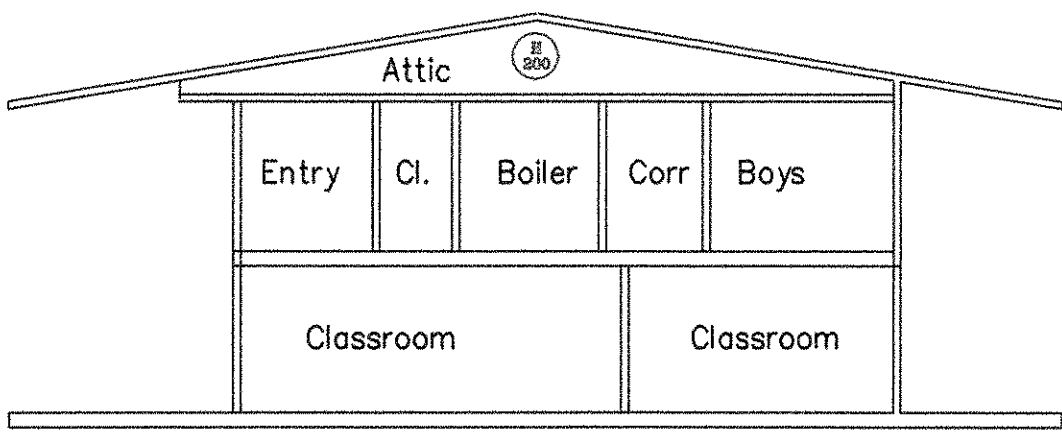
FIRE ALARM
CLASSROOM PLANS
SCALE: 1/8"=1'-0"



Section B-B



Section A-A



Section C-C

SECTION VIEWS

GENERAL NOTES

REVISIONS

FIRE ALARM SYMBOLS LEGEND

DASE ENTERPRISES, INC.
9 TALBOTT FARM ROAD
MENDON, MA 01756
PHONE: 508.634.9000 FAX: 508.478.9678
E-MAIL: sales@daseinc.com

TOWN OF NORTH SMITHFIELD
HALLIWELL ELEMENTARY SCHOOL
NORTH SMITHFIELD, RHODE ISLAND

CONTRACTOR: DASE ENTERPRISES, INC.

FIRE ALARM PLAN

PERMIT NO.	
CONTRACT NO.	
APPROVAL	
C.D.T. MD	
SCALE	1/8"=1'-0"
DATE	11/21/03
REVISED	
PLUTED	FA-2 of 2