

NOTE:

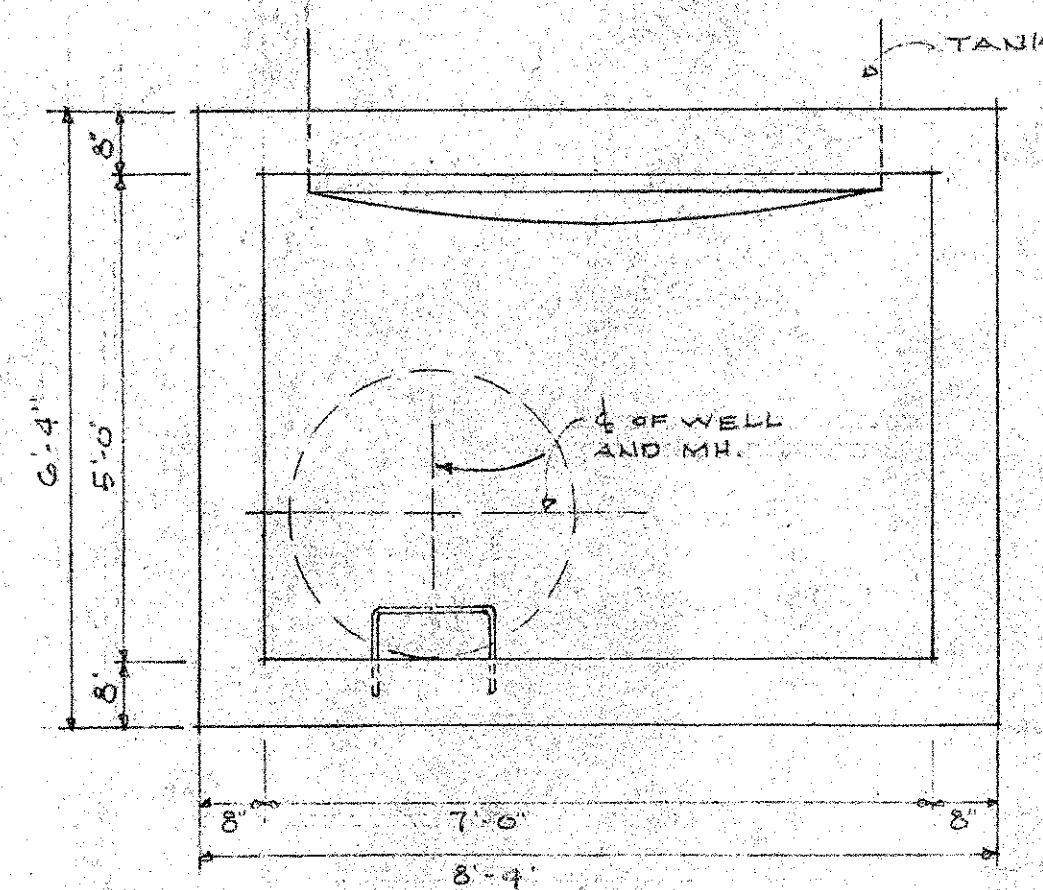
1. MANHOLE RIM AT GRADE.
2. TOP OF CONC. 12" BELOW FINISHED GRADE.
3. COVERS SHALL BE WATER & FROST PROOF.
4. ALL WALLS, FLOOR & TOP 8" THICK REINFORCED WITH #4 @ 6" BOTH WAYS. DIAGONALS AT ROOF OPENING. FULL LAP ALL CORNERS.

MANHOLE AT EXISTING WELL -

1. INSIDE DIMENSIONS 5'-0" x 7'-0" x 6'-0" HIGH.

MANHOLE AT NEW WELL -

1. INSIDE DIMENSIONS 5'-0" x 5'-0" x 6'-0" HIGH.

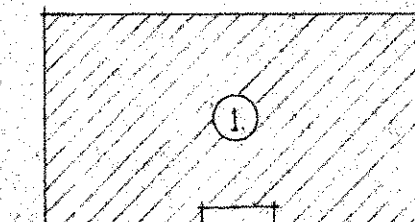
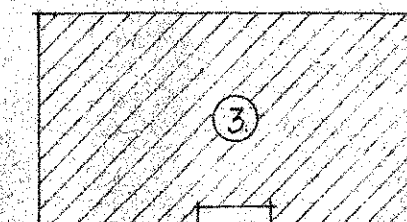
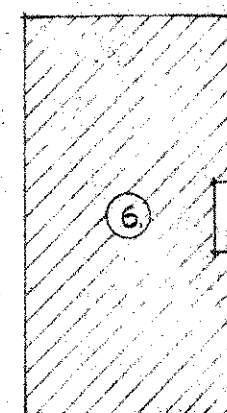
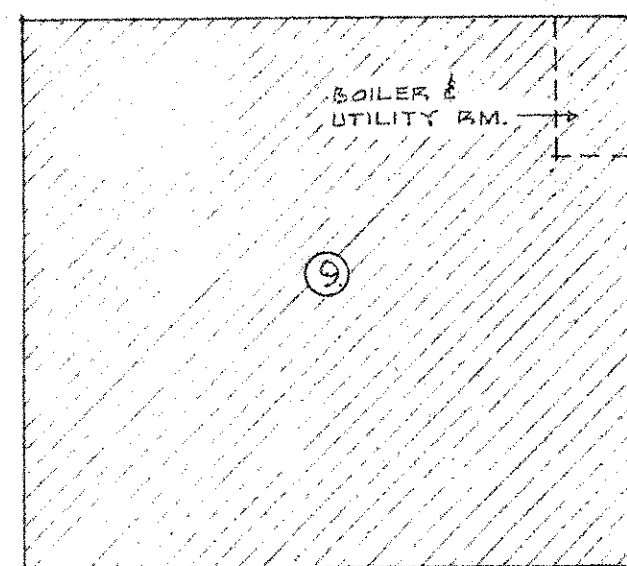


PLAN - MANHOLE AT EXISTING WELL

SCALE 1/2" = 1'-0"

NEW MANHOLE AT EXISTING WELL.

7000 GAL. PRESSURE STORAGE TANK  
6 FT. DIA. - 35'-9" LONG. ELECTRICALLY  
WELDED. 3/8" SHELL, 1/4" HEAD.  
100 p.s.i. WORKING PRESSURE.



PARTIAL SITE PLAN

SCALE 1" = 30'-0"

LAYOUT of TWO WELL WATER SUPPLY  
ELEMENTARY - JUNIOR HIGH SCHOOL  
TOWN of NORTH SMITHFIELD, R.I.

CULL-ROBINSON AND GREEN  
ARCHITECTS & ENGINEERS, PROVIDENCE, R.I.  
29 OCTOBER 1956