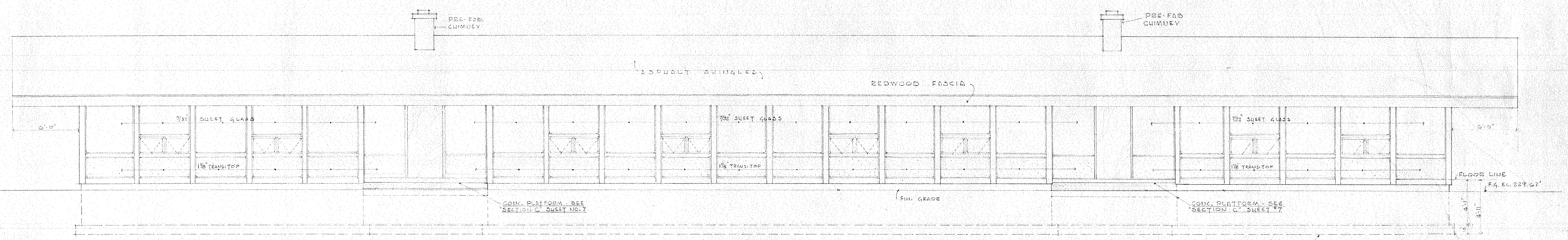
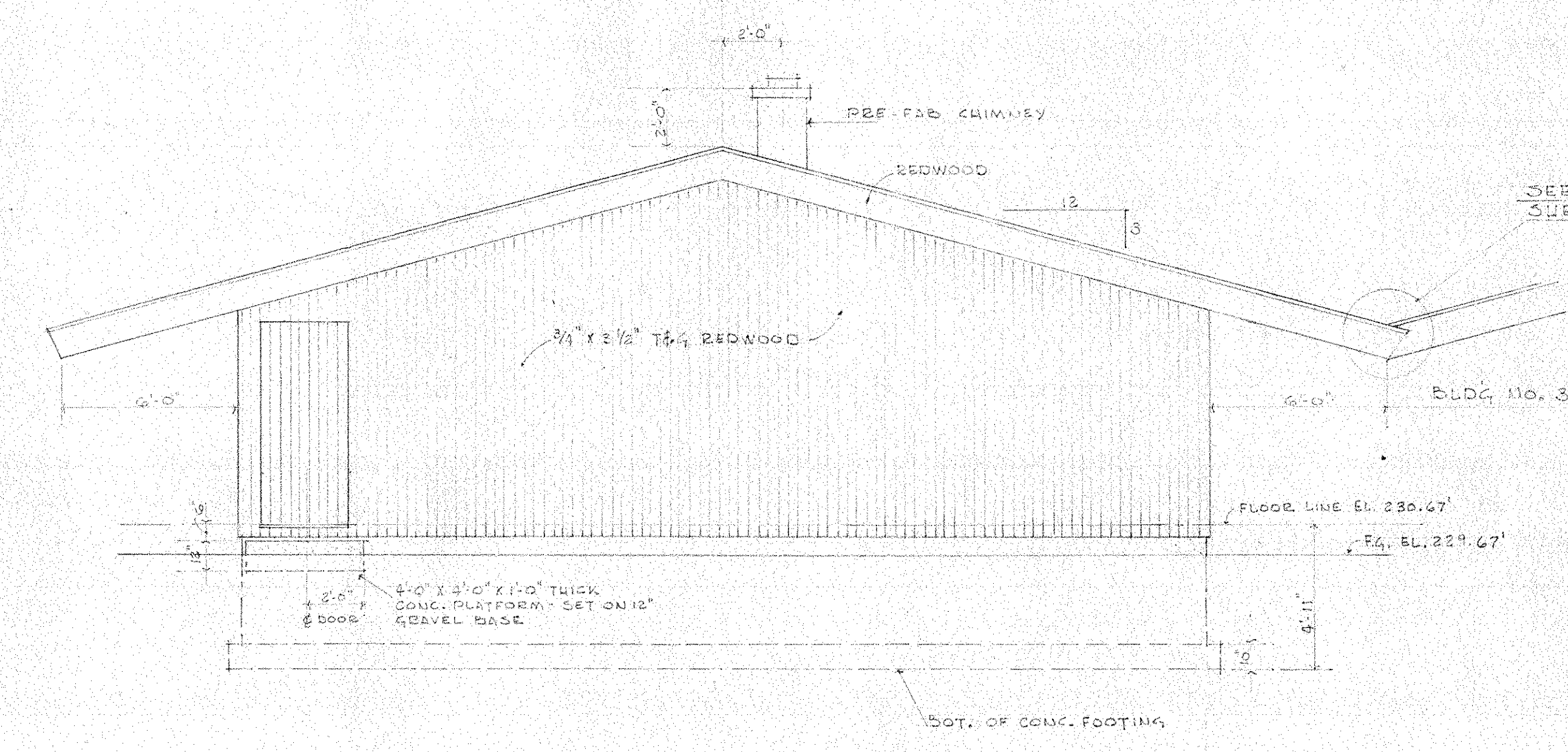


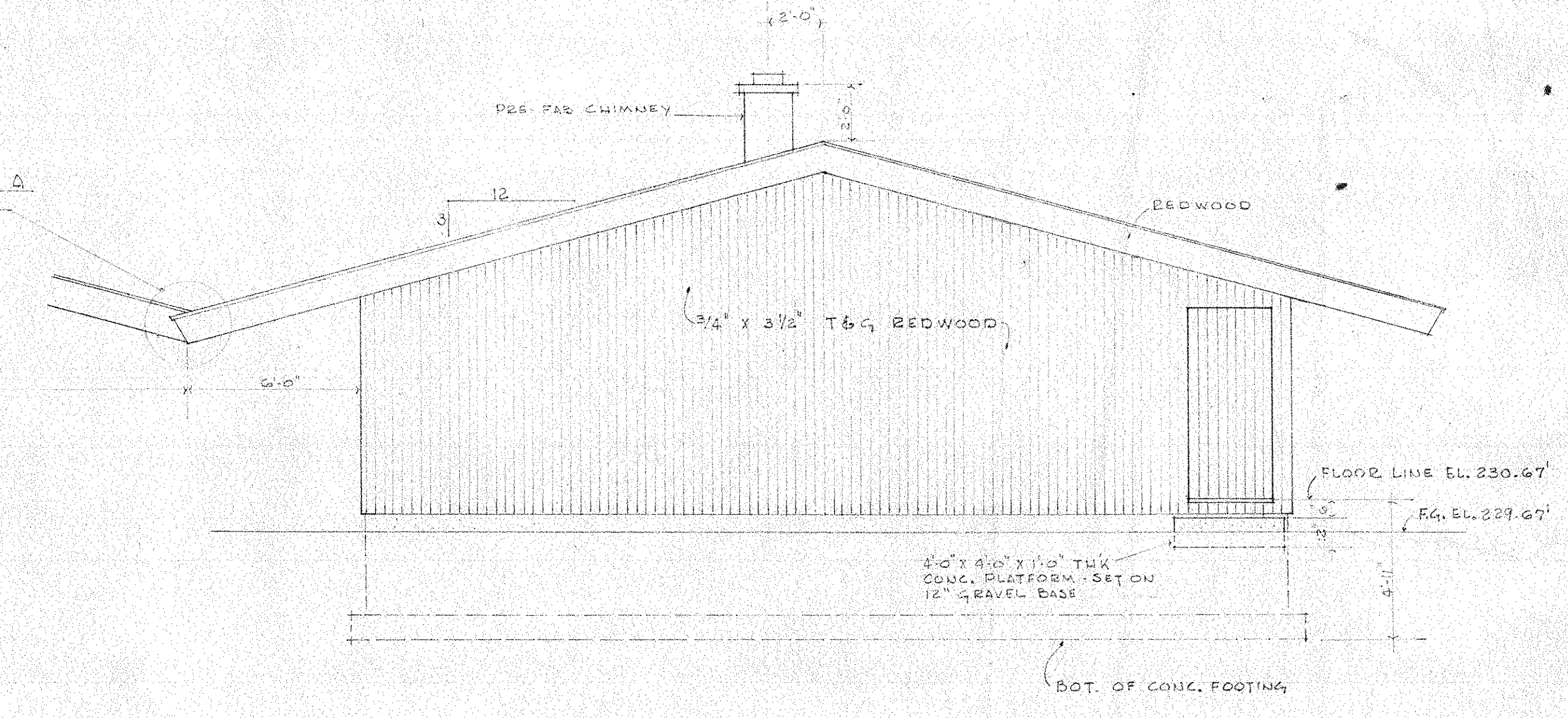
SOUTH ELEVATION 1/4"=1'-0"



NORTH ELEVATION 1/4"=1'-0"



EAST ELEVATION 1/4"=1'-0"



WEST ELEVATION 1/4"=1'-0"

		DR. HARRY L. HALLIWELL MEMORIAL SCHOOL NORTH SMITHFIELD, R.I. NEW CLASSROOM BUILDINGS ELEVATIONS BUILDING A	
PROJ. MGR. DRAWN BY CHECKED BY DATE SCALE AS NOTED PROJ. NO. 6109	V.M.G. D.E. V.M.G. MAY 9, 1961 AS NOTED 5	CASTELLUCCI GALLI & PLANKA ASSOCIATES ARCHITECT & ENGINEERS 75 EMPIRE ST. PROVIDENCE, R.I.	SHT. NO. 2 SHT. 2 OF 14