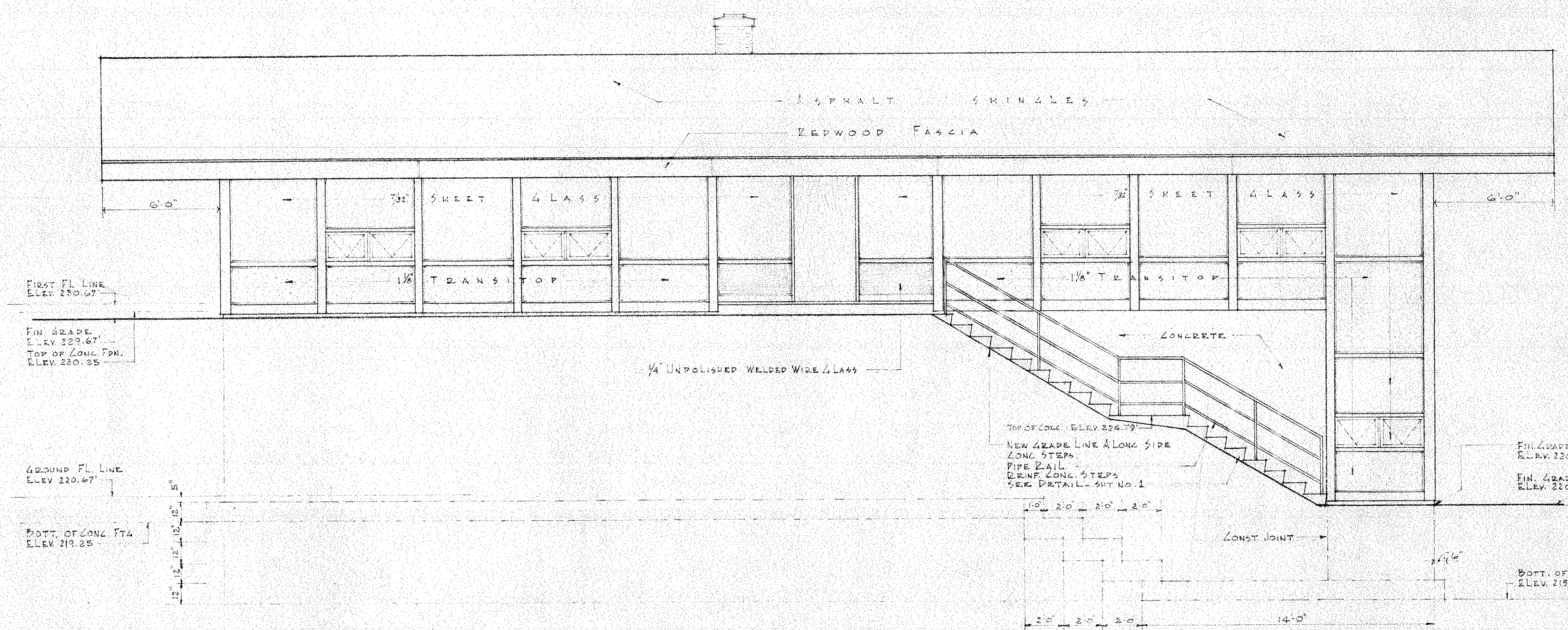
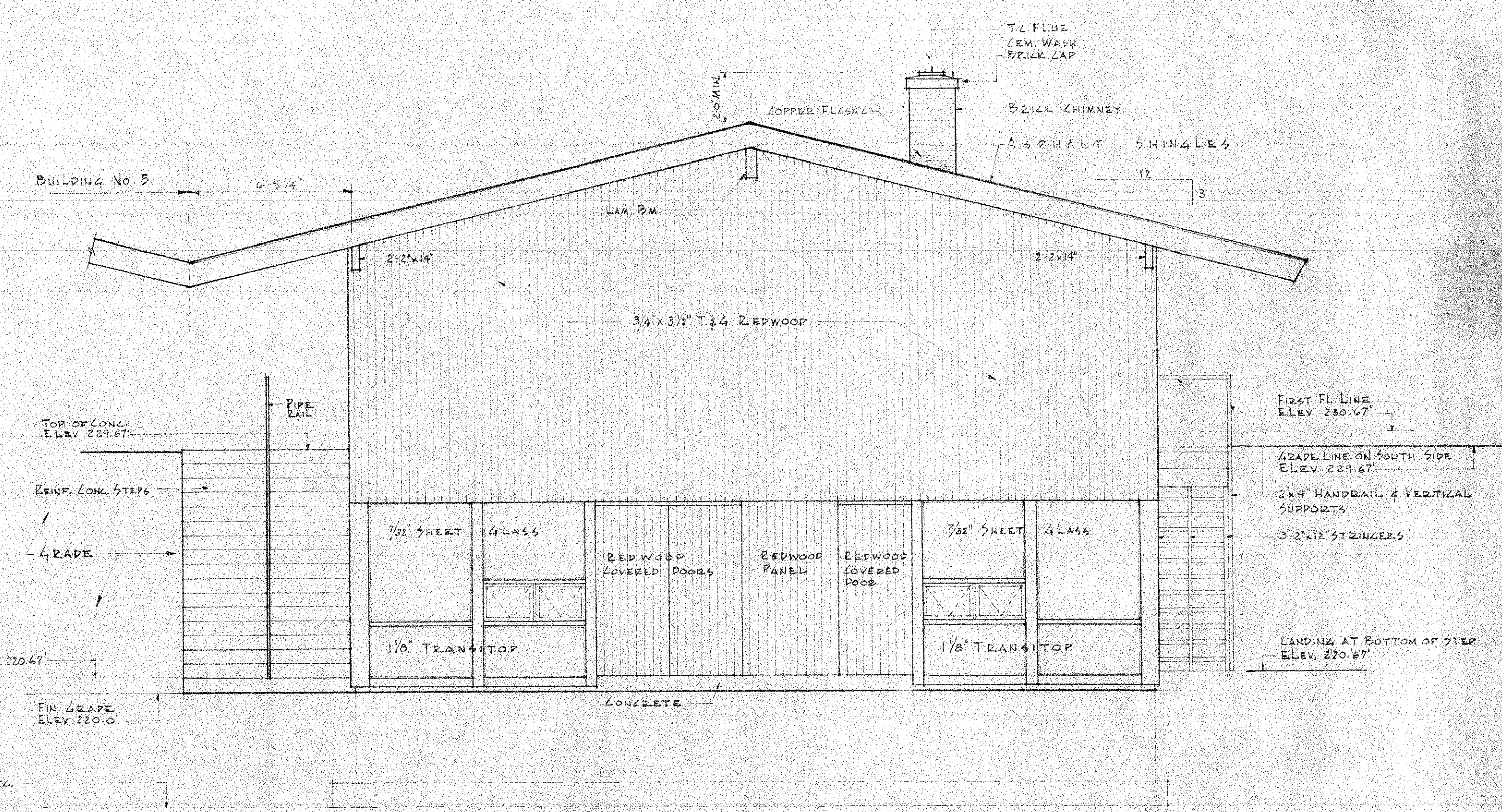


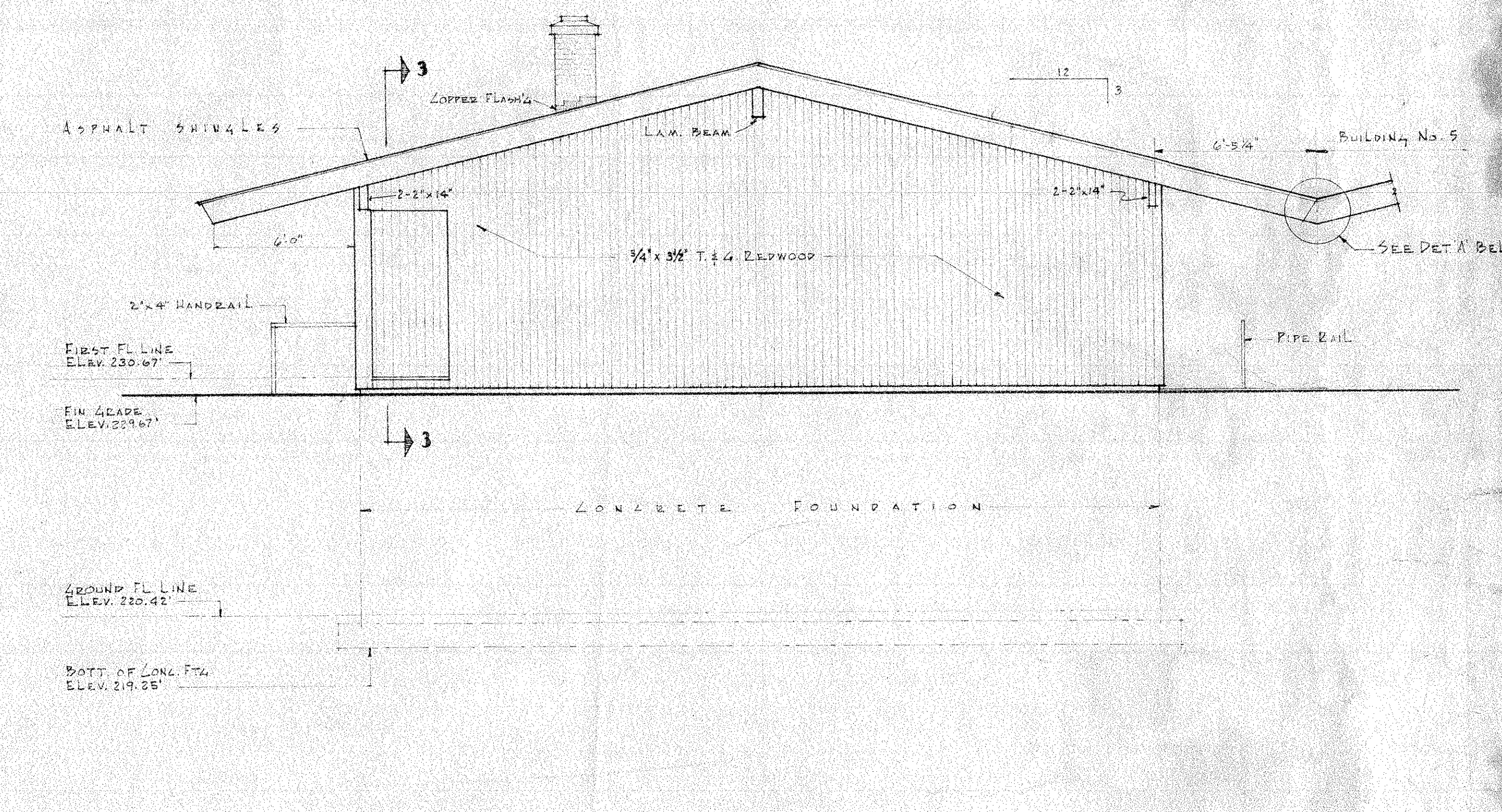
WEST ELEVATION
SCALE 1/4"=1'-0"



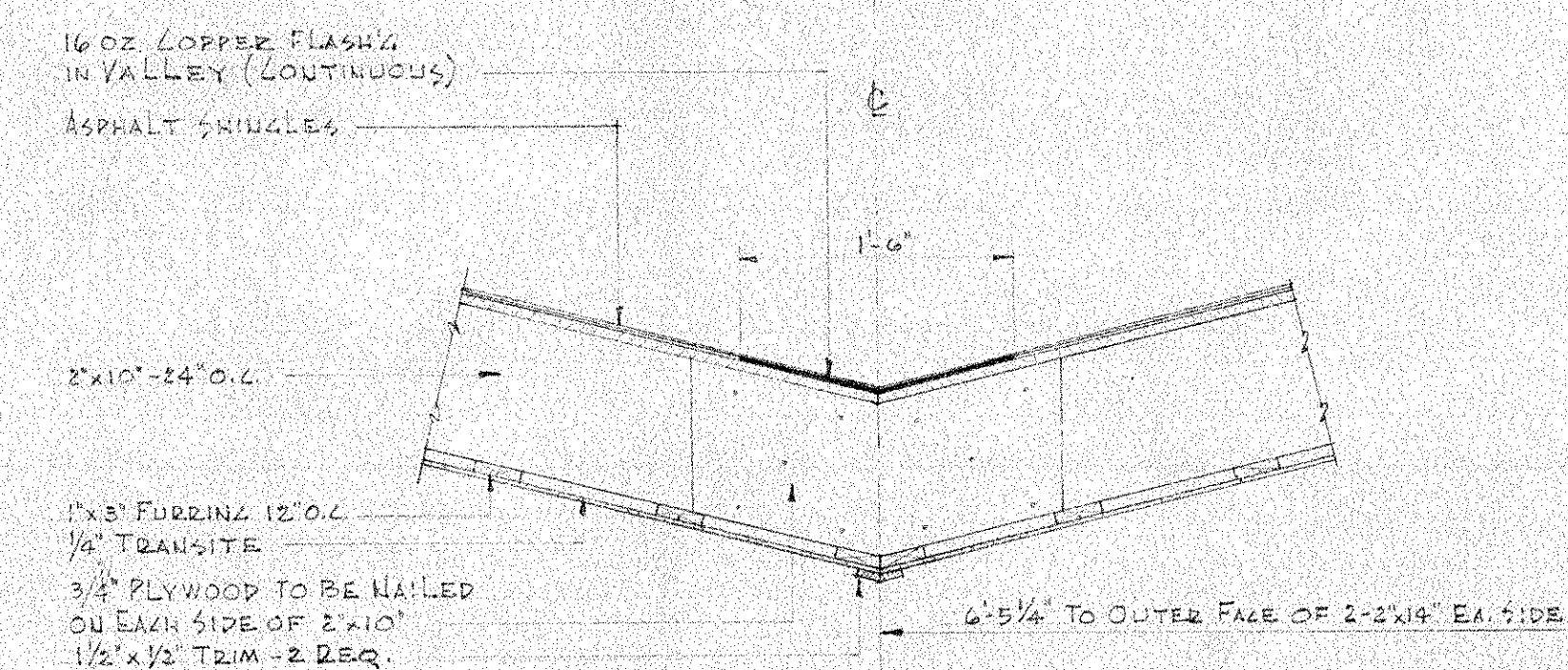
EAST ELEVATION
SCALE 1/4"=1'-0"



NORTH ELEVATION
SCALE 1/4"=1'-0"



SOUTH ELEVATION
SCALE 1/4"=1'-0"



DETAIL "A"
SCALE 1"=1'-0"

VINCENT M. GALLI No. 1219 REGISTERED PROFESSIONAL ENGINEER		DR. HARRY L. HALLIWELL MEMORIAL SCHOOL NORTH SMITHFIELD, R.I. NEW CLASSROOM BUILDINGS ELEVATIONS BUILDING 5	
PROJ. MGR. V.G. DRAWN BY P.E.F. CHECKED BY V.G.		CASTELLUCCI GALLI & PLANKA ASSOCIATES ARCHITECT & ENGINEERS 75 EMPIRE ST. PROVIDENCE, R.I. 01864	
DATE MAY 9, 1961		SCALE 1/4"=1'-0"	
PROJ. NO. 6109		DRAWER NO. 5	