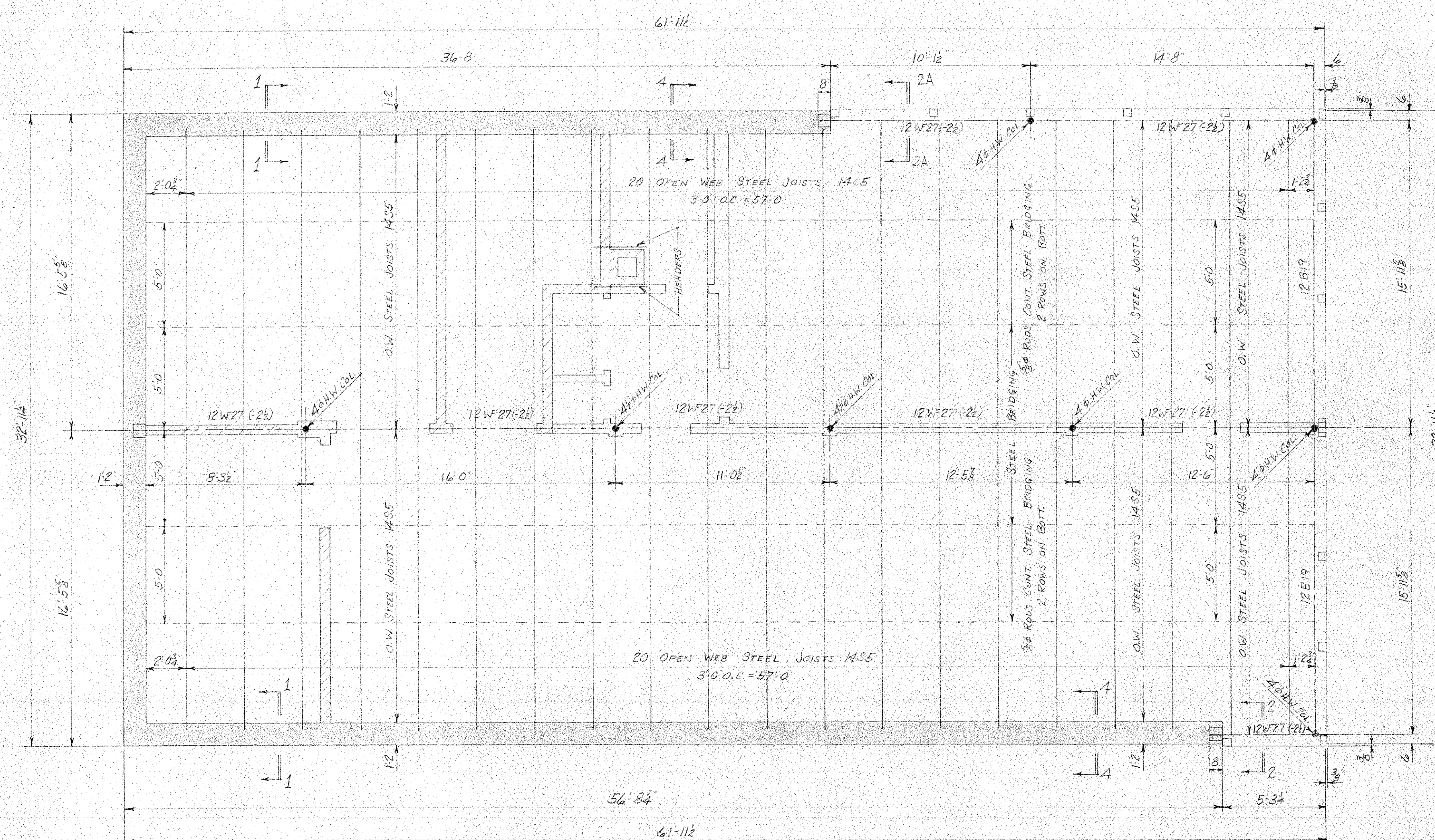
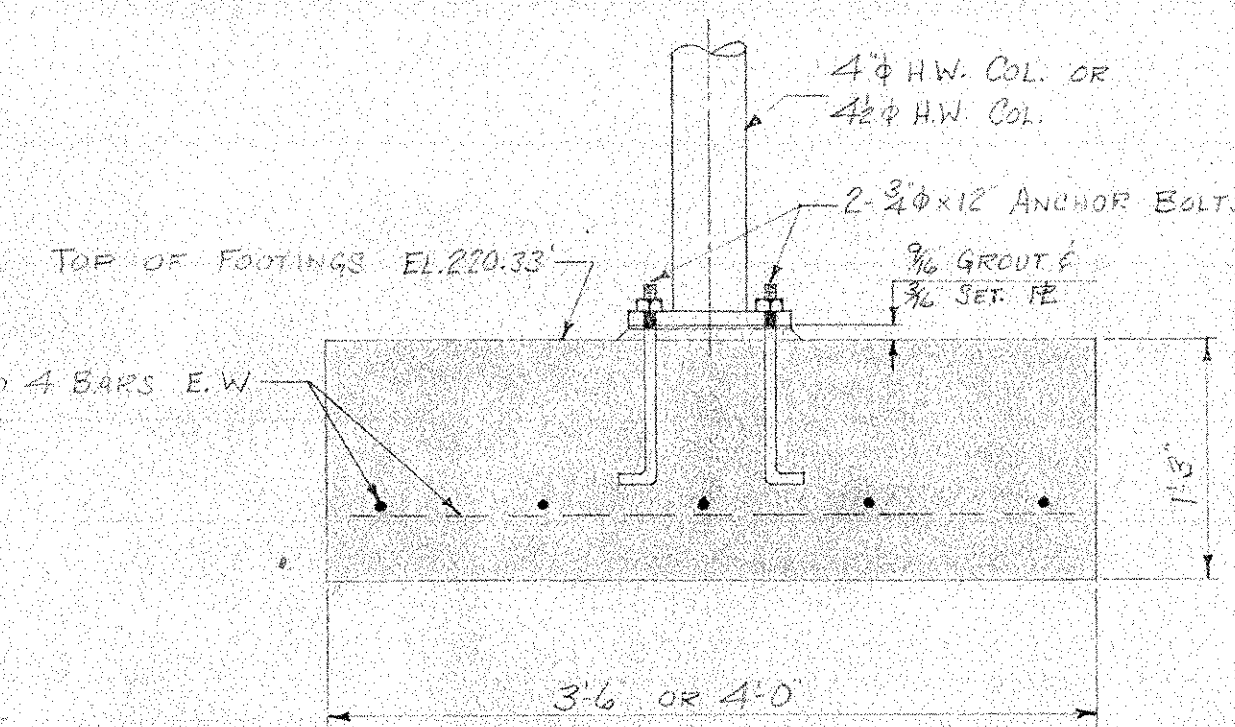
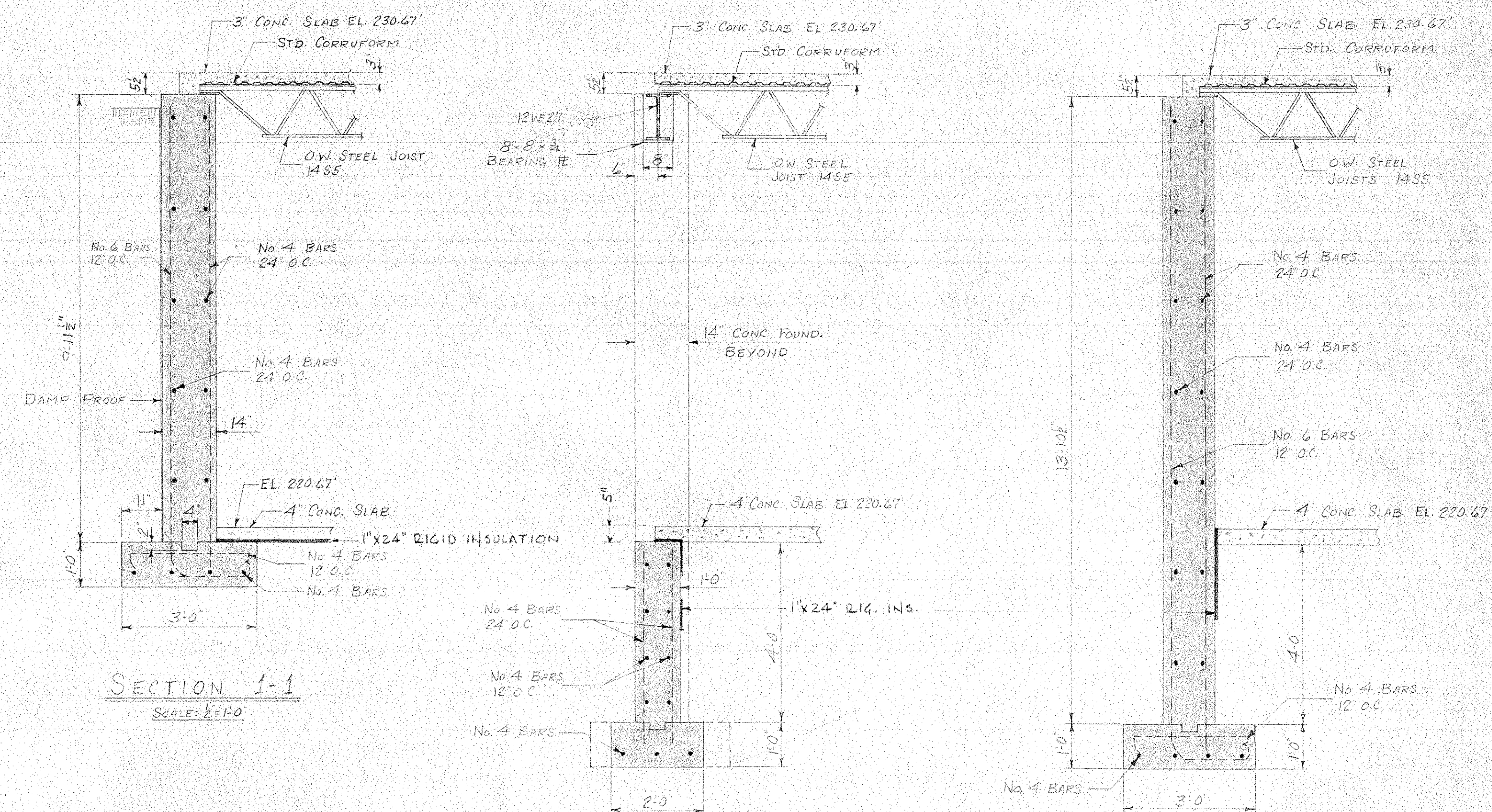


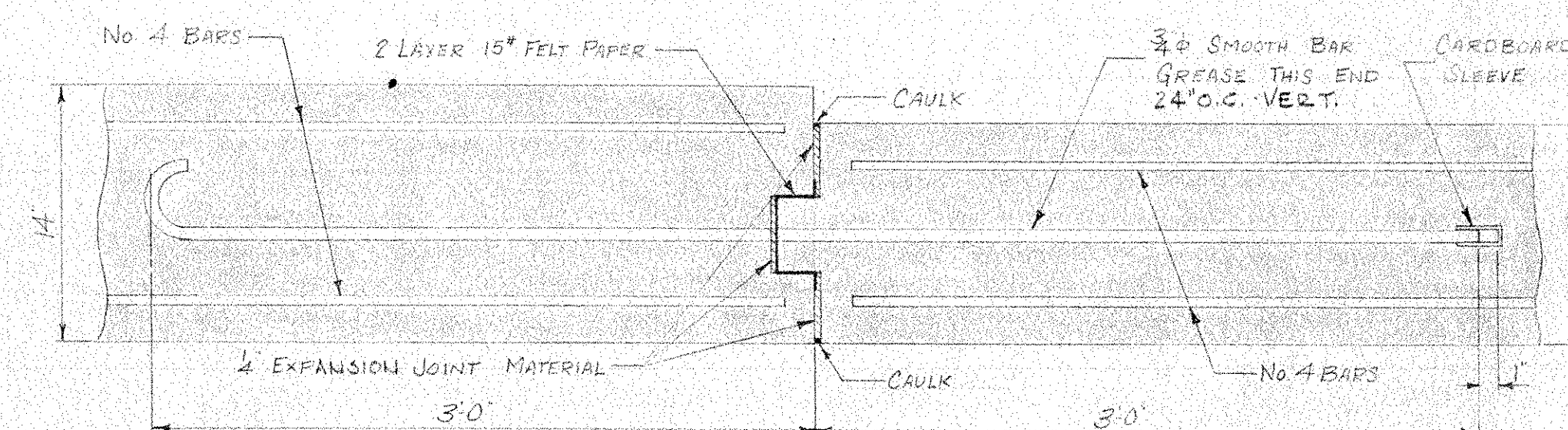
FOUNDATION PLAN  
SCALE: 1/4" = 1'-0"



FIRST FLOOR FRAMING PLAN  
SCALE: 1/4" = 1'-0"



TYPICAL COLUMN BASE DETAIL  
AT FOOTINGS  
SCALE: 1/2" = 1'-0"

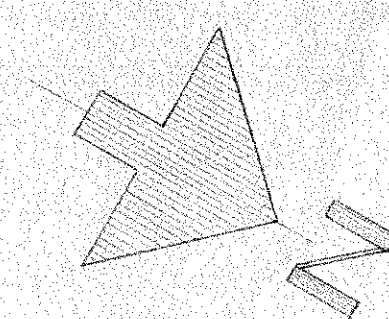


CONSTRUCTION JOINT DETAIL  
SCALE: 1/2" = 1'-0"

# CONCRETE & STEEL NOTES:

1. CONCRETE FOR FOUNDATIONS AND FOOTINGS SHALL HAVE AN ULTIMATE COMPRESSIVE STRENGTH OF 2500 P.S.I. AT 28 DAYS.
2. STEEL REINFORCING RODS SHALL BE DEFORMED BARS CONFORMING TO A.S.T.M. SPEC. A-307, WITH A MINIMUM OF 2" OF CONCRETE COVER. PROVIDE ALL NECESSARY EXCESSORIES.
3. APPROVED TYPE VIBRATORS SHALL BE USED TO CONSOLIDATE ALL CONCRETE.
4. SET ALL TEMPLATES, SLEEVES AND BOLTS REQUIRED FOR THE VARIOUS TRADES.
5. CONTRACTOR SHALL VERIFY ALL DIMENSIONS WITH THE FLOOR PLANS BEFORE POURING CONCRETE.
6. ALL STRUCTURAL STEEL AND OPEN WEB JOISTS SHALL BE SHOP PAINTED WITH RUST INHIBITING PAINT EQUAL TO RED LEAD. NO ASPHALTIC PAINTS SHALL BE ALLOWED.
7. OPEN WEB JOISTS SHALL CONFORM TO THE STEEL JOIST INSTITUTE SPECIFICATIONS: SHALL BEAR A MINIMUM OF 4" ON CONCRETE AND 2" ON STEEL. FIELD WELD ALL STEEL TO STEEL CONNECTIONS.
8. CONSTRUCTION JOINTS IN CONCRETE SHALL BE MADE ONLY WHERE INDICATED.

CALL TO NORTH



		<b>DR. HARRY L. HALLIWELL</b> <b>MEMORIAL SCHOOL</b> <b>NORTH SMITHFIELD, R. I.</b>	
PROJ. MGR. V.G. DRAWN BY A.S. CHECKED BY V.G.		<b>NEW CLASSROOM BUILDINGS</b>	
DATE MAY 9 1961		<b>CASTELLUCCI</b> <b>GALLI &amp;</b> <b>PLANKA</b> <b>ASSOCIATES</b>	
SCALE NOTED		SHT. NO. <b>6</b>	
PROJ. NO. 6109 DRAWER NO. 5		<b>ARCHITECT &amp; ENGINEERS</b> 75 EMPIRE ST. PROVIDENCE, R.I. SHT. 6 OF 14	