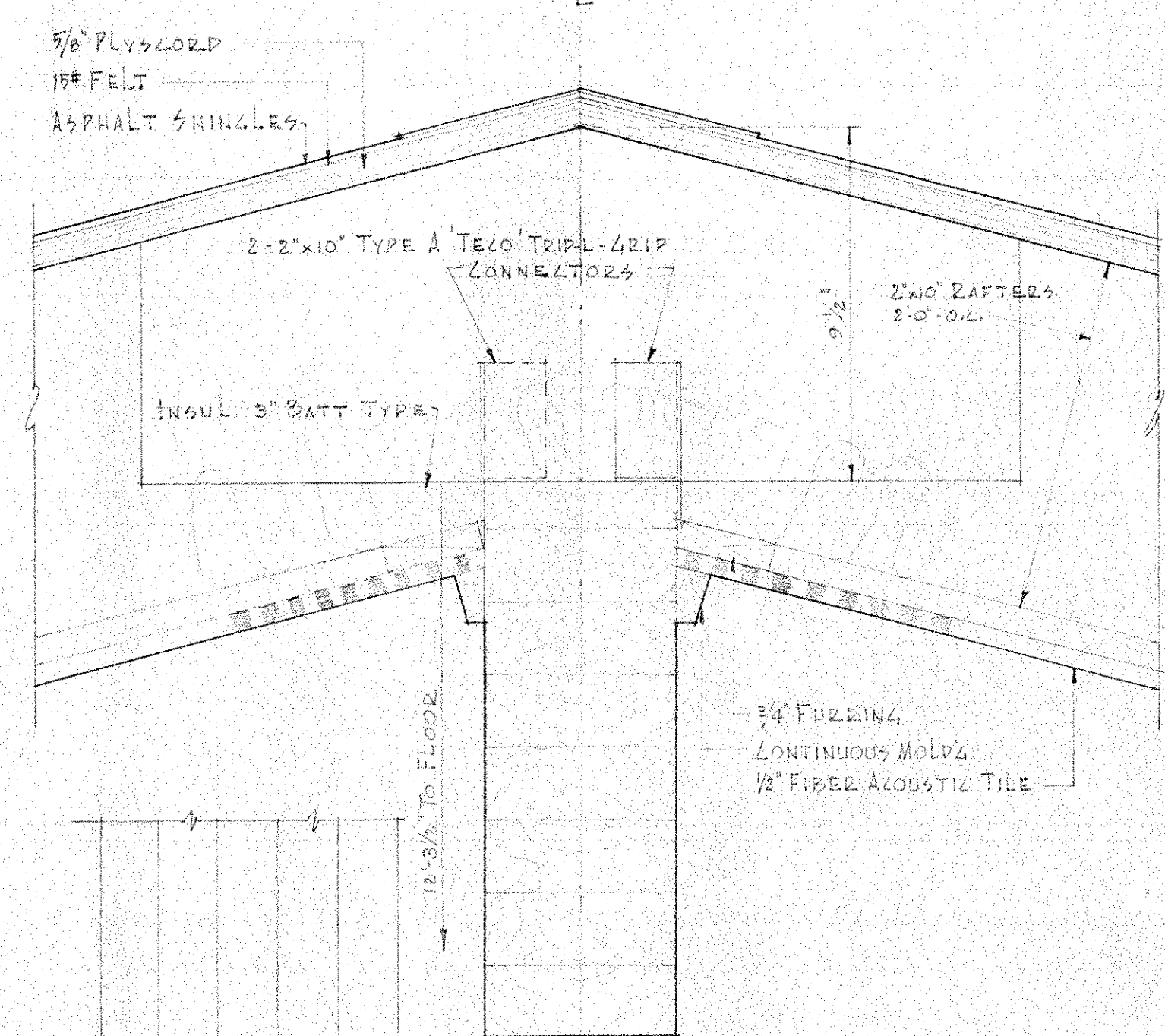


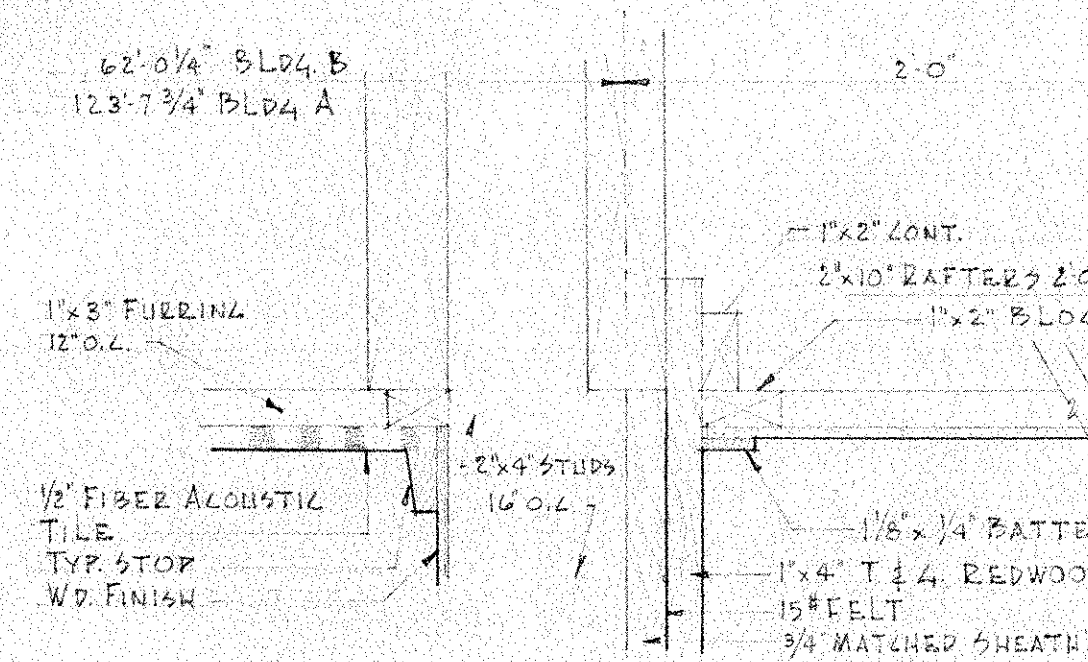
SECTION A

SECTION B

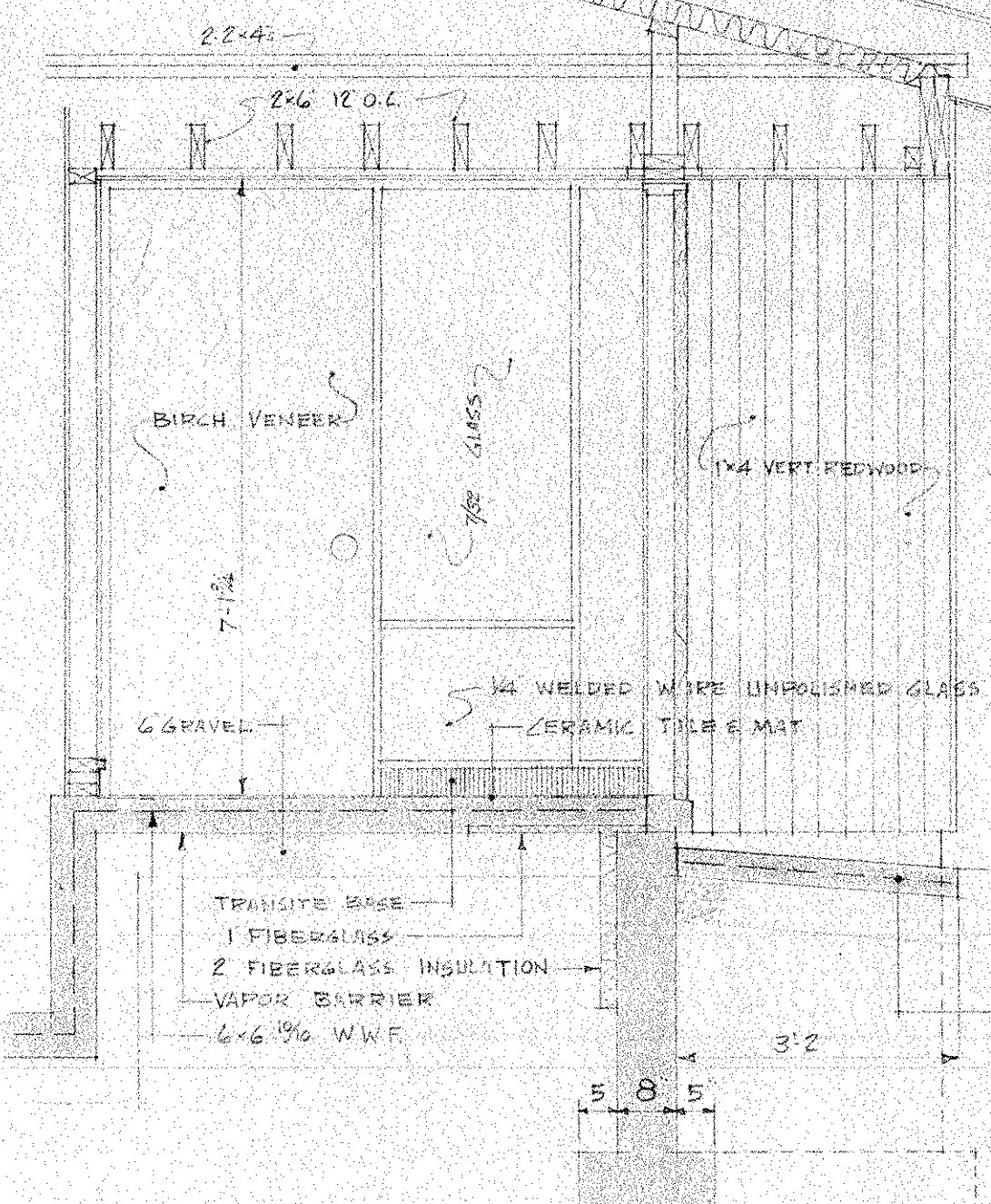
SCALE 1/8"=1'-0"



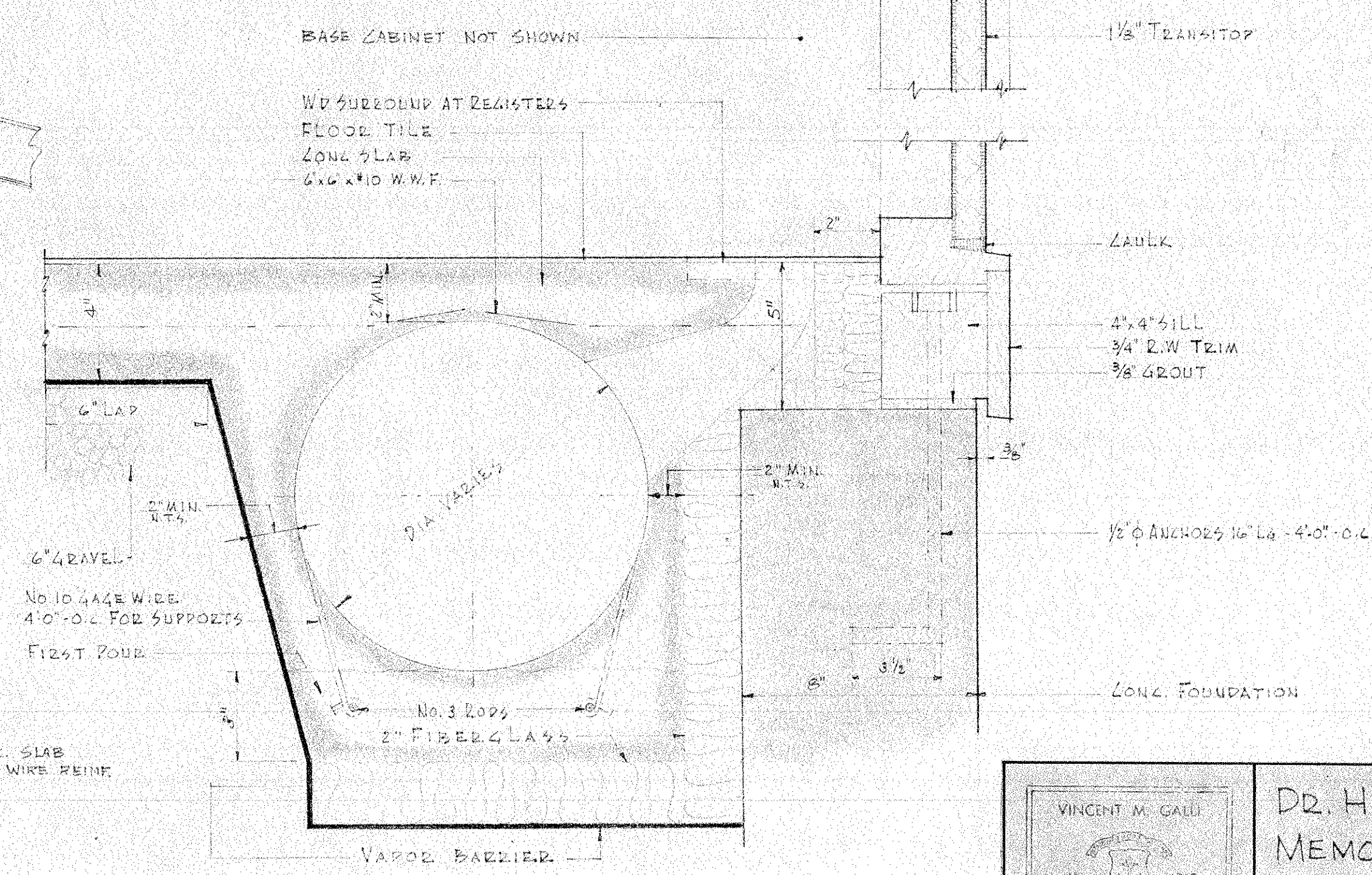
DETAIL A
SCALE 3/4"=1'-0"



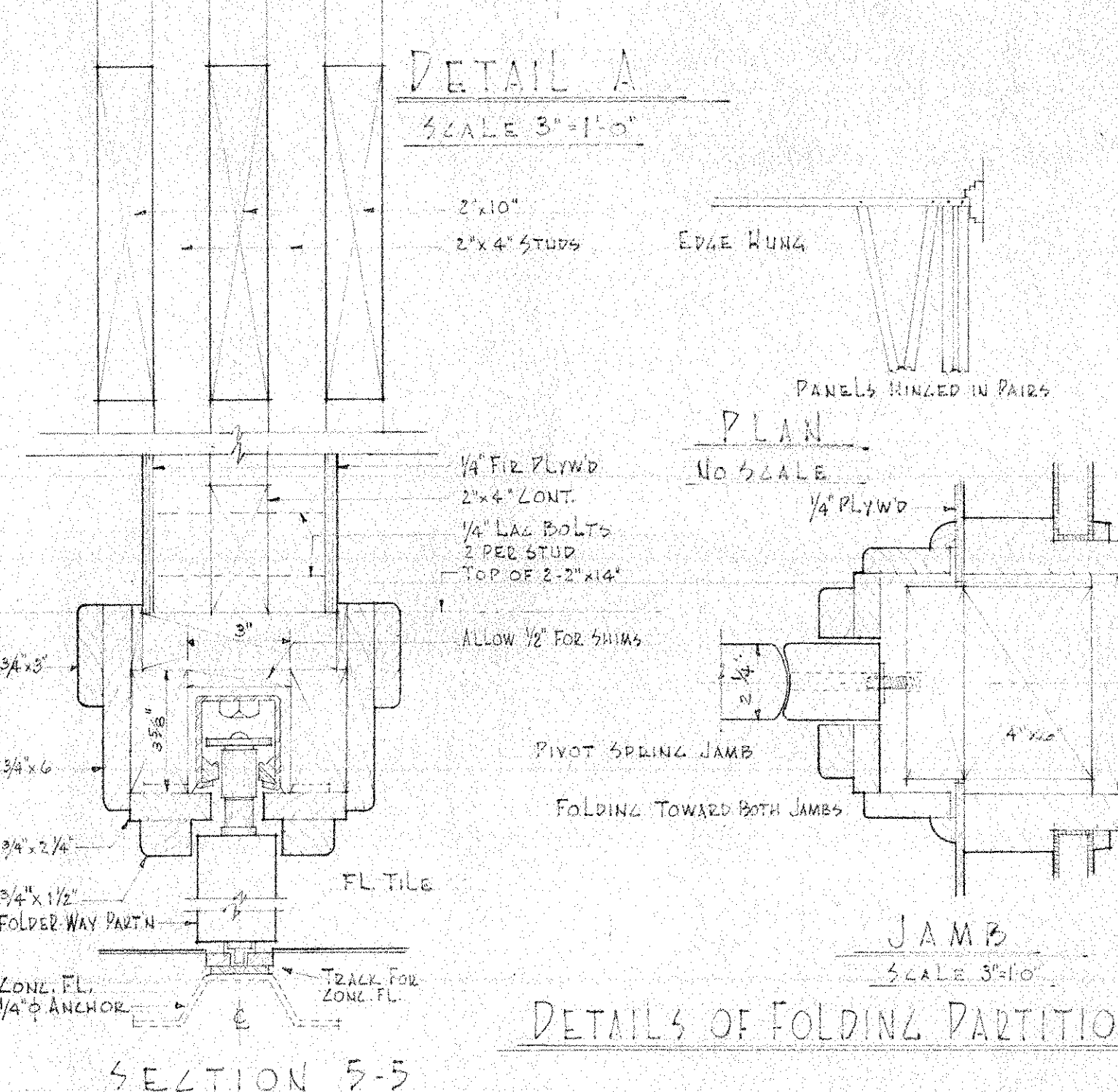
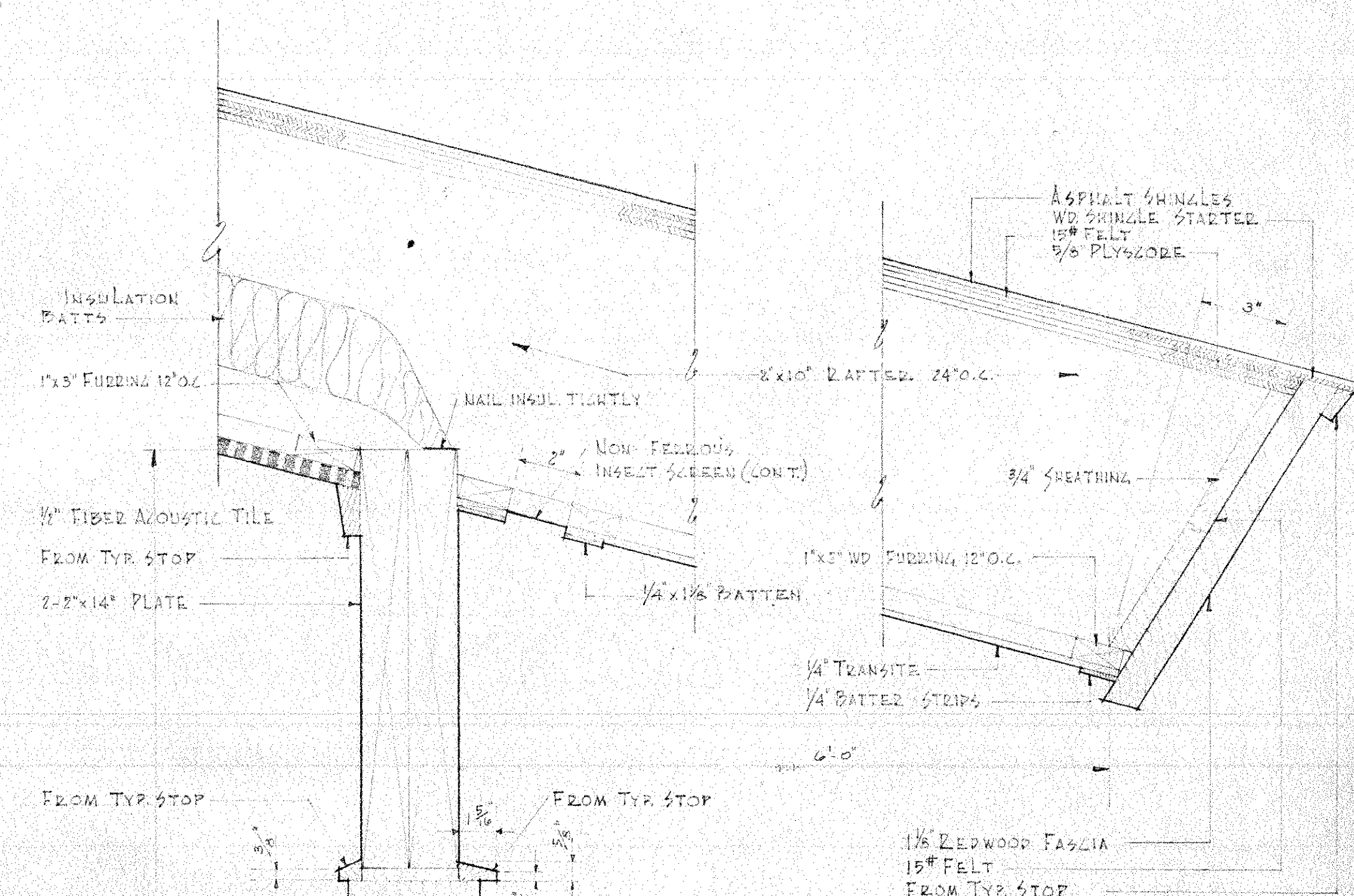
SECTION 3-3
SCALE 3/4"=1'-0"



SECTION 4-4 (SECT. F SIMILAR)
SCALE 3/4"=1'-0"



SECTION 4-4
SCALE 3/4"=1'-0"



DETAILS OF FOLDING PARTITION

		DR. HARRY L. HALLIWELL MEMORIAL SCHOOL NORTH SMITHFIELD, R. I. NEW CLASSROOM BUILDINGS SECTIONS & DETAILS BUILDING 'A'	
PROJ. MGR. 1/5 DRAWN BY 1/5 CHECKED BY 1/5	DATE 1/19/96 SCALE NOTED PROJ. NO. 6109 DRAWER NO. 5	CASTELLUCCI GALLI & PLANKA ASSOCIATES ARCHITECT & ENGINEERS 75 EMPIRE ST. PROVIDENCE, R.I.	SHT. NO. 7 7 OF 14